



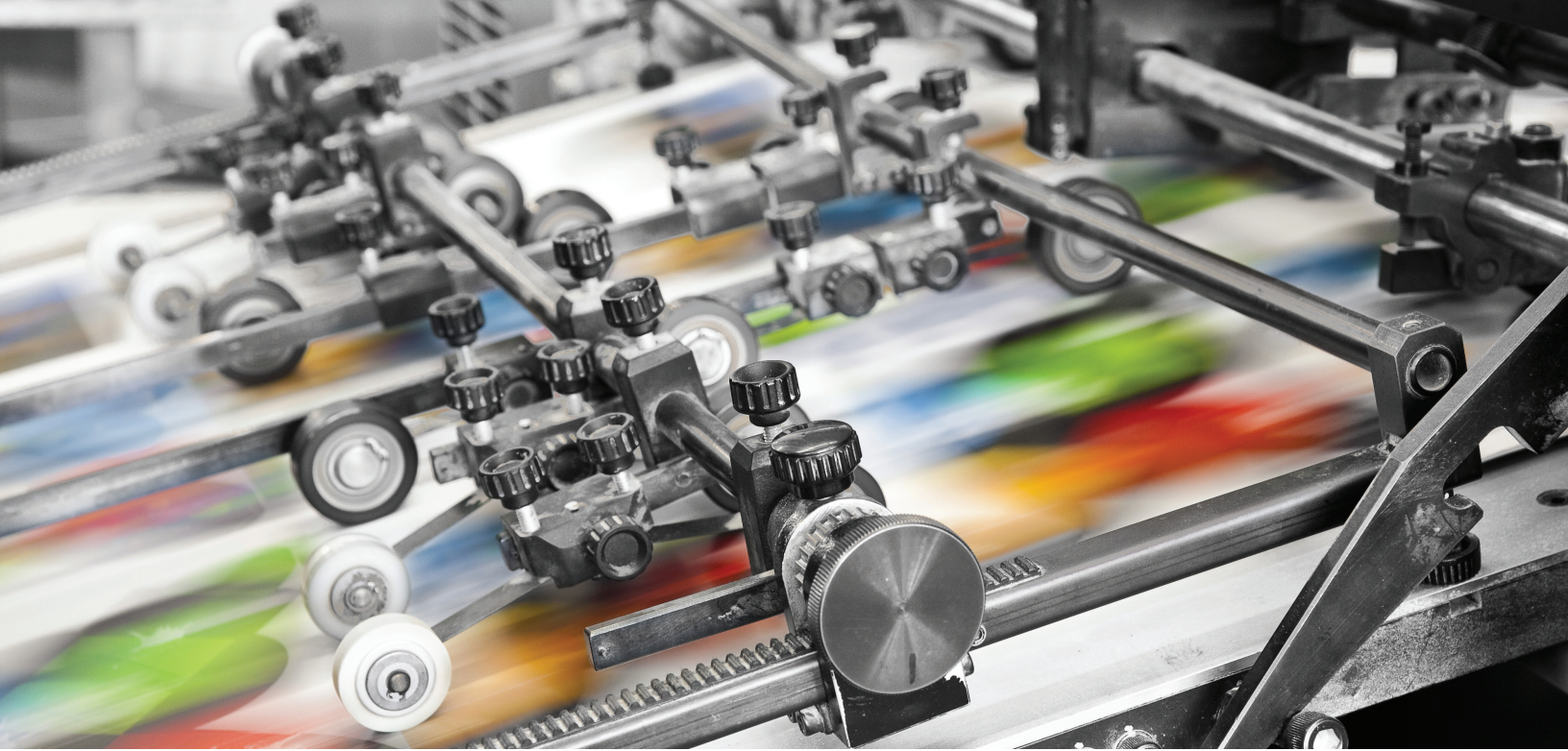
RBI BEARING

Bearings + Technology + Solutions

ONE WAY CLUTCH BEARINGS

www.rbibearing.com + 1-800-708-2128





ONE WAY CLUTCH BEARINGS

RBI Bearing, a trusted bearing and precision machined parts manufacturer in the global market, produces the CSK, RCB, RC, HFL & HF series one way bearings. Our ISO9002 and TS16949 certified bearing factory utilizes modern manufacturing technology, automated production and assembly lines to produce high quality bearings.



MAIN APPLICATIONS

- Oil Pumping
- Roller Coasters
- Steel Strapping & Branding Tools
- High Voltage Switch Gears
- Motor Bikes & Go Karts
- Car Wash
- Printers & Copiers
- Encoder
- Furniture Production
- Industrial Fans
- Mixers
- Paper Handling
- Sowing Machines
- Textile Machines
- Winches
- Spinning Bikes
- Exercise Equipment
- Conveyors
- Food Production
- Fasteners Industries
- Packaging Machines
- Printing Press
- Automatic Teller Machines
- Ticket Vending Machines
- Fishing Tackle
- Paper Towel Dispensers
- Appliances
- Two Speed Gearboxes
- Rack Indexing Drives
- RC Cars



CSK SERIES

Outer Ring: 52100 Steel

Sprags: 52100 Steel

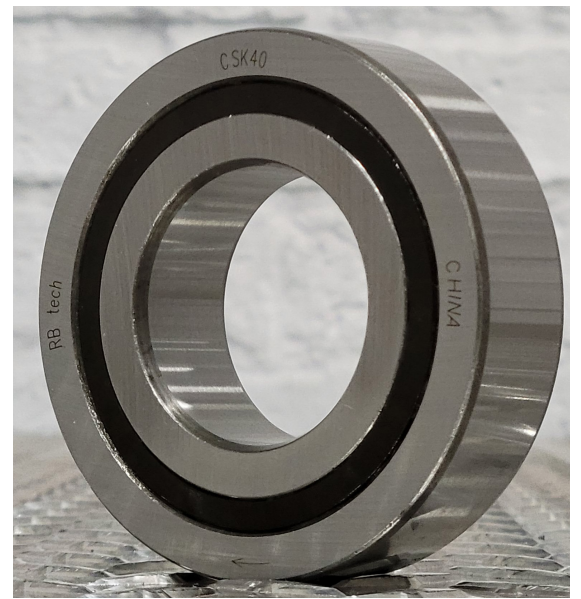
Inner Ring: 52100 Steel

Cage: Nylon 6/6 with Glass Fiber

Balls: 52100 Steel

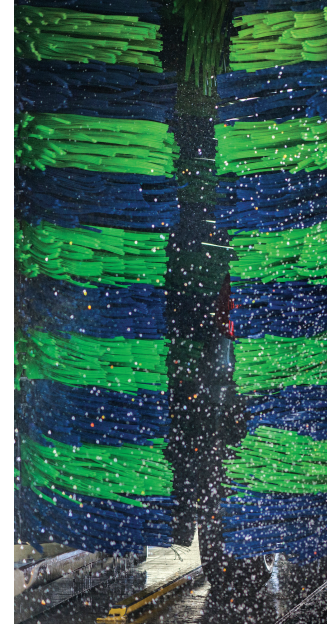
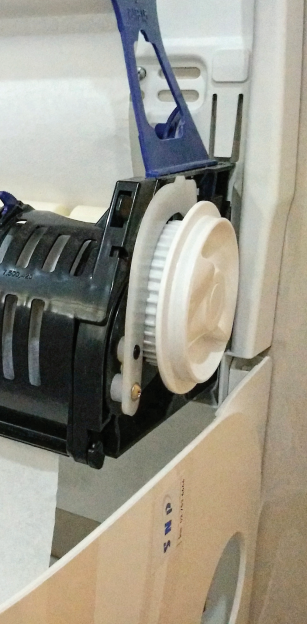
Seals: Nylon 6/6 with Glass Fiber

Operating temperature: 21 to 140°F (-6 to 60°C). Special grease available for operating temperatures -40 to 212°F (-40 to 100°C).



Part #'s			Bore Dia. (mm)	Outer Dia. (mm)	Width (mm)	Bearing Size	Torque Capacity (N-m)	Limiting Speed (RPM)	Load Ratings		Keyway Inner Ring (mm)	Keyway Outer Ring (mm)	Weight (g)
No Keyway	With Inner Ring Keyway	With Inner & Outer Ring Keyways							Dynamic Cr (kN)	Static Cor (kN)			
CSK8	-	-	8	22	9	608	2.5	15000	3.28	0.86	-	-	15
CSK12	-	-	12	32	10	6201	9.3	10000	6.1	2.77	-	-	40
CSK15	CSK15-1K	CSK15-2K	15	35	11	6202	17	8400	7.4	3.42	5.0 X 1.2	2.0 x 0.6	60
CSK17	CSK17-1K	CSK17-2K	17	40	12	6203	30	7350	7.9	3.8	5.0 X 1.2	2.0 x 1.0	70
CSK20	CSK20-1K	CSK20-2K	20	47	14	6204	50	6000	9.4	4.46	6.0 X 1.6	3.0 x 1.5	110
CSK25	CSK25-1K	CSK25-2K	25	52	15	6205	85	5200	10.7	5.46	8.0 X 2.0	6.0 x 2.0	140
CSK30	CSK30-1K	CSK30-2K	30	62	16	6206	138	4200	11.7	6.45	8.0 X 2.0	6.0 x 2.0	210
CSK35	CSK35-1K	CSK35-2K	35	72	17	6207	175	3600	12.6	7.28	10.0 x 2.4	8.0 x 2.5	300
CSK40	CSK40-1K	CSK40-2K	40	80	22	6208	325	3000	15.54	12.25	12.0 x 3.3	10.0 x 3.0	500

**FOR MORE INFORMATION, QUOTES OR SAMPLES
CALL RBI AT 1-800-708-2128.**



RCB & HFL SERIES

NEEDLE ROLLER CLUTCH & BEARING ASSEMBLY

Outer Ring: Steel

Needle Roller: 52100 Steel

Cage w/integral springs: Nylon 6/6 with Glass Fiber

Cage w/stainless steel springs: Nylon 6/6 with Glass Fiber
304 Stainless Steel

Operating temperature: 90°C for a standard plastic spring design and 120 °C for the stainless steel spring.



RCB SERIES - INCH DESIGN - INTEGRAL PLASTIC SPRINGS

Part #	Bore Dia. (in)	Outer Dia. (in)	Width (in)	Load Ratings		Torque Capacity (N-m)	Limiting Speed Shaft (RPM)	Weight (g)
				Dynamic Cr (kN)	Static Cor (kN)			
RCB061014	.3750	.6250	.8750	4.89	6.01	5.45	18000	14
RCB081214	.5000	.7500	.8750	6.49	7.12	8.85	17000	16
RCB101416	.6250	.8750	1.0000	8.14	8.05	16.8	14000	23
RCB121616	.7500	1.0000	1.0000	9.79	8.9	23.3	12000	26
RCB162117	1.000	1.3125	1.0625	17.6	15.4	49.6	8700	45

RCB clutch bearings can come with stainless steel springs inserted into the molded cage to position the rollers for lockup. Add suffix FS.

HFL SERIES - METRIC DESIGN - STAINLESS STEEL SPRINGS

Part #	Bore Dia. (mm)	Outer Dia. (mm)	Width (mm)	Load Ratings		Torque Capacity (N-m)	Limiting Speed Shaft (RPM)	Weight (g)
				Dynamic Cr (kN)	Static Cor (kN)			
HFL-0615	6	10	15	-	-	1.76	23000	4
HFL-0822	8	12	22	3650	3950	3.15	17000	7
HFL-1022	10	14	22	3950	4500	5.3	14000	8
HFL-1226	12	18	26	6300	6700	12.2	11000	18
HFL-1426	14	20	26	6800	7800	17.3	9500	20
HFL-1626	16	22	26	7400	9000	20.5	8500	22
HFL-1826	18	24	26	8000	10200	24.1	7500	25
HFL-2026	20	26	26	8500	11400	28.5	7000	27
HFL-2530	25	32	30	10600	14000	66	5500	44
HFL-3030	30	37	30	11600	16900	90	4500	51
HFL-3530	35	42	30	12200	18800	121	3900	58

HFL clutch bearings can come with a molded cage with integral plastic springs to position the rollers for lockup. Add suffix KF.



RC & HF SERIES

NEEDLE ROLLER CLUTCH

Outer Ring: Steel

Needle Roller: 52100 Steel

Cage w/integral springs: Nylon 6/6 with Glass Fiber

Cage w/stainless steel springs: Nylon 6/6 with Glass Fiber
304 Stainless Steel

Operating temperature: 90°C for a standard plastic spring design
and 120 °C for the stainless steel spring.



RC SERIES - INCH DESIGN - INTEGRAL PLASTIC SPRINGS

Part #	Bore Dia. (in)	Outer Dia. (in)	Width (in)	Torque Capacity (N-m)	Limiting Speed Shaft (RPM)	Weight (g)
RC040708	.2500	.4375	.5000	2.02	20000	4
RC061008	.3750	.6250	.5000	5.45	18000	8
RC081208	.5000	.7500	.5000	8.85	17000	9
RC101410	.6250	.8750	.6250	16.8	14000	14
RC121610	.7500	1.0000	.6250	23.3	12000	15
RC162110	1.000	1.3125	.6250	49.6	8700	26

RC clutch bearings can come with stainless steel springs inserted into the molded cage to position the rollers for lockup. Add suffix FS.

HF SERIES - METRIC DESIGN - STAINLESS STEEL SPRINGS

Part #	Bore Dia. (mm)	Outer Dia. (mm)	Width (mm)	Torque Capacity (N-m)	Limiting Speed Shaft (RPM)	Weight (g)
HF0612	6	10	12	1.76	23000	3
HF0812	8	12	12	3.15	17000	3.5
HF1012	10	14	12	5.3	14000	4
HF1216	12	18	16	12.2	11000	11
HF1416	14	20	16	17.3	9500	13
HF1616	16	22	16	20.5	8500	14
HF1816	18	24	16	24.1	7500	16
HF2016	20	26	16	28.5	7000	17
HF2520	25	32	20	66	5500	30
HF3020	30	37	20	90	4500	36
HF3520	35	42	20	121	3900	40

HF clutch bearings can come with a molded cage with integral plastic springs to position the rollers for lockup. Add suffix KF.



RBI BEARING

Bearings + Technology + Solutions

ONE WAY CLUTCH BEARINGS

www.rbibearing.com + 1-800-708-2128



101 S. Gary Ave. Ste. B., Roselle, IL, 60172